

Doming Instructions

Doming is a technique that takes a few moments to learn and a few attempts to master.

First thing to remember is don't worry about air bubbles. When you apply the doming fluid you will get bubbles of trapped air but these can be removed quickly and simply as explained later on.

The second thing is to ensure you dome in a place with very little dust in the air and after you have finished doming ensure you always cover the artwork you have just domed for at least 12 hours.

When you apply doming fluid it will naturally find the edges of your cut artwork. Even if you accidentally go past the edges of your cut artwork the fluid will contract so it comes back onto the cut artwork.

The diagram shows how the doming fluid settles on a piece of cut artwork from application on the left until it settles on the right. This process happens within a couple of seconds.



When applying the doming fluid aim for the centre of your cut artwork. Apply the doming fluid by squeezing the **Dispenser Handle**. You do not need to initially cover the entire cut artwork as the doming fluid will settle after a few seconds. After this time if the fluid hasn't reached all the corners use the **Mixing Tube** and a little extra doming fluid to ensure the corners are covered.



When doming a sheet of labels, start at the top and work towards you so you are not dropping any dust into the domed artwork.

Replacing A Cartridge

When the **Cartridge** is empty the ratchet action will not move the plunger any further. To replace a **Cartridge** push the **Plunger Release Tab** up and retract the **Plunger** fully. Then unclip the **Cartridge Release Tab** and pull down, remove the **Cartridge** and replace with a new one.

If switching **Cartridges** you can reuse the **Mixing Tube** if you are halfway through a doming job but it is a good idea to mark the **Mixing Tube** where it meets the **Cartridge**. If you have marked the **Mixing Tube** when you put the same **Mixing Tube** on the new **Cartridge** you must ensure that it is fitted the same way around.

Once you have finished your doming project, you need to remove the **Cartridge** and **Mixing Tube**. You can replace the **Cartridge Cap** so the contents of the **Cartridge** can be used at a later date. The **Mixing Tube** cannot be reused and should be disposed of.

Air Bubble Removal

If your domed cut artwork contains trapped air bubbles get a blow torch and point it in the direction of the domed labels. This will instantly remove the trapped air. Please ensure you take appropriate precautions when using a blow torch.

Curing

The doming fluid takes 12 hours to dry to the touch, ideally leave your domed artwork for 24 hours to ensure it is fully cured. Domed artwork should be left to cure at room temperature. Make sure it is covered during the curing process.

This document has been produced by **MDP Supplies** for the benefit of our customers and is for information purposes only. **MDP Supplies** cannot be held responsible for any errors, omissions or any loss, whether actual or consequential, from following the advice given in this document.

© **MDP Supplies** 2012

All content, including text, drawings and photographs are copyright. No part of this publication may be used without the prior written consent from **MDP Supplies**.

MDP Supplies Unit 12 Lumina Park, Martindale Road, Bromborough, Wirral, CH62 3PT United Kingdom

MDP

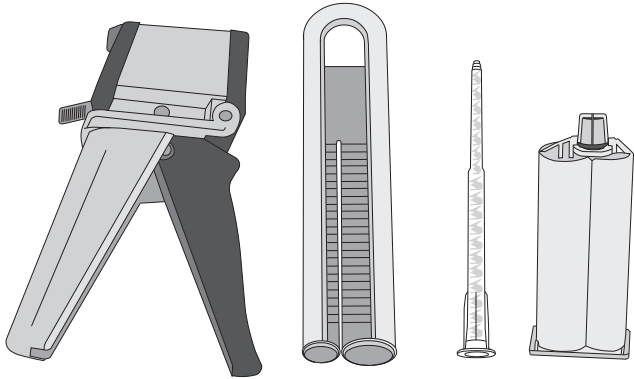
www.mdpsupplies.com

Doming Assembly & Application Instructions

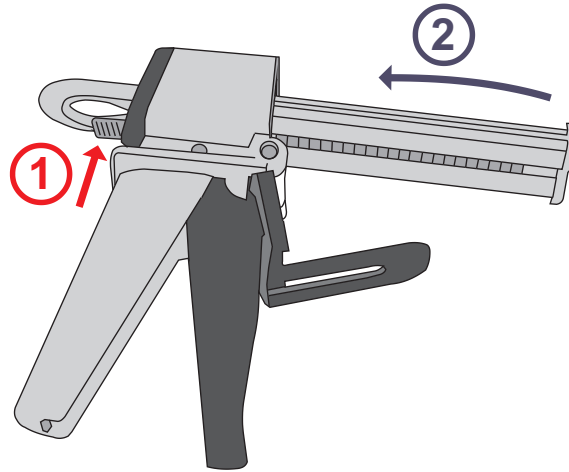
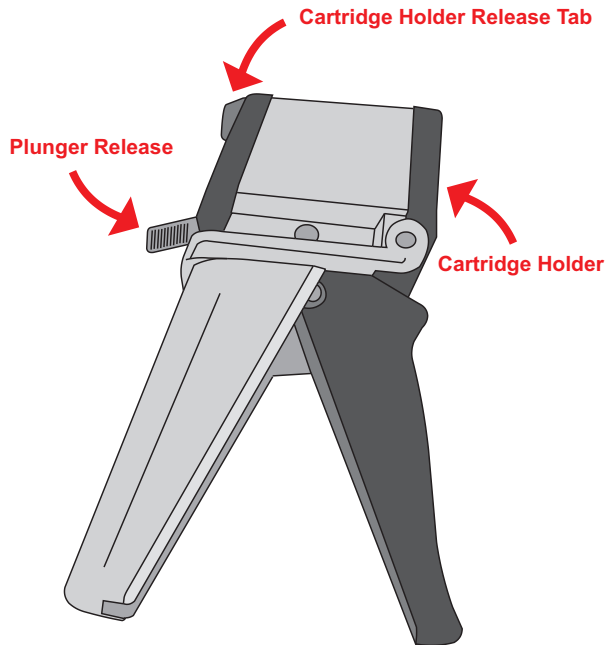
www.mdpsupplies.co.uk

Assembly Instructions

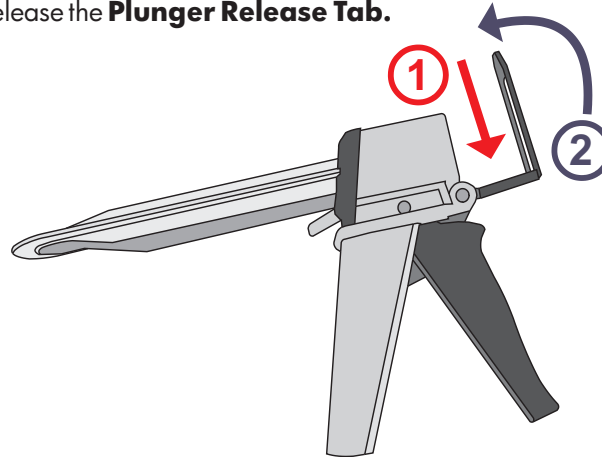
The doming equipment consists of 4 main components. These are (shown left to right) the **Dispenser Gun**, **Plunger**, **Mixing Tube** & **Cartridge**



Take the **Dispenser Gun** and lift up the **Cartridge Holder Release Tab**. Pull down the **Cartridge Holder** as far as it will go.



Push up the **Plunger Release Tab** (Step 1) and hold it whilst you insert the plunger into the front of the **Dispenser Gun (A)** ensuring the ratchet grooves on the **Plunger** are facing downwards. Push the **Plunger** all the way back into the **Dispensing Gun** (Step 2). When fully inserted release the **Plunger Release Tab**.



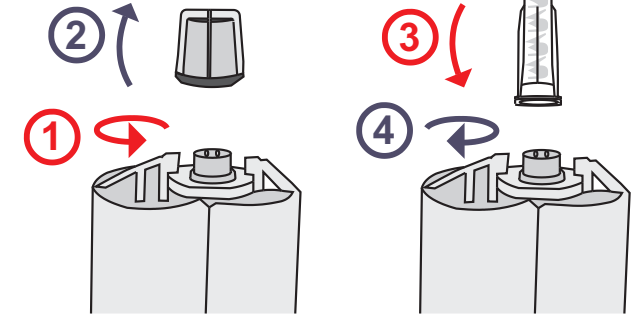
Pull the **Cartridge Holder** up slightly so it is at 90 degrees to the main orientation of the **Plunger**. Now insert a **Cartridge** (Step 1). The **Cartridge** contains 2 different sized tubes. It will only fit in one way.

Once a **Cartridge** is in the **Cartridge Holder** rotate the **Cartridge Holder** back to its original position (Step 2) and clip the **Cartridge Holder Release Tab** back in place.

Each **Cartridge** has a bayonet cap. First ensure the **Cartridge** is vertical with the bayonet end upper most.

To release the cap twist it anti clockwise a quarter turn and then lift off (Steps 1 & 2).

Then take a **Mixing Tube** and place onto the **Cartridge** and turn a quarter turn clockwise to attach (Steps 3 & 4).

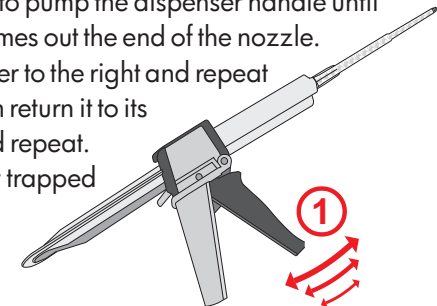


Keeping the **Mixing Tube** upwards now slowly pump the **Dispenser Handle** on the **Dispenser Gun** (Step 1). This action makes the **Plunger** move towards the **Cartridge**.

After a few ratchets you will see the doming fluid start to rise in the **Mixing Tube**.

IMPORTANT

Tilt the dispenser to the left and point at a shallow angle upwards. Continue to pump the dispenser handle until the doming fluid comes out the end of the nozzle. Then tilt the dispenser to the right and repeat this action, and then return it to its upright position and repeat. This will release any trapped air bubbles in the doming fluid.



You Are Now Ready To Start Doming